

Disassembly Procedure

Please follow the information provided in this section to perform the complete disassembly procedure of the notebook. Be sure to use proper tools described before.

ASUS L8400 B (ID1) Series Notebook consists of various modules. This chapter describes the procedures for the complete notebook disassembly. In addition, in between procedures, the detailed disassembly procedure of individual modules will be provided for your service needs.

The disassembly procedure consists of the following steps:

- Battery module
- Keyboard, Memory and Function Cap
- CPU Module
- LCD Module
- Palm Rest Module
- HDD Module
- Top Case Module
- Bottom Case Module
- Motherboard Module
- FDD-Module

BATTERY

Battery module

The illustration below shows how to remove the battery module.

1. Turn the notebook over. Unlock and hold the latch (no.1), and firmly slide the other latch (no.2) to the top and remove the battery.



 K / B & F / C

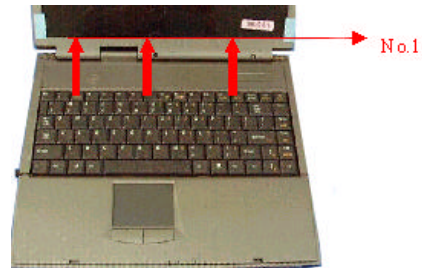
Keyboard and Function Cap

The illustration below shows how to remove the keyboard plate and the Function Cap.

 K / B R E M O V A L

Removing Keyboard plate

1. Open the display panel.
2. Push the three latches in (no. 1) with a pair of tweezers or a single-slotted screwdriver and lift the keyboard plate up.



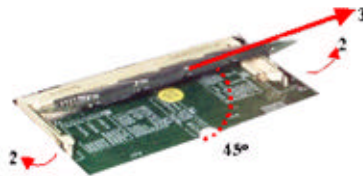
3. Lay the keyboard down over the TouchPad module. **Do not remove the keyboard yet.** The keyboard cable is still attached.

 M E M O R Y
R E M O V A L

Removing Memory module

The L8400 B (ID1) Series Notebook comes standard with 64MB of RAM onboard. There is one expansion SODIMM socket for you to upgrade the total memory up to 192MB with a 128MB module

1. If there is an existing memory, remove it by opening the latches (no. 2), which will pop the module up to a 45° angle, and then pulling out the module in that angle (no. 3).



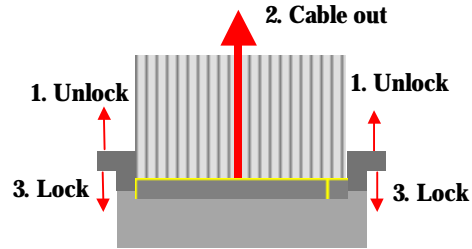
 C A B L E
R E M O V A L

Removing Keyboard Cable

2. Use a flexible connector tool to unlock the cable connector on both ends (no. 1).
3. Carefully pull out the keyboard cable (no. 2) with a pair of tweezers.
4. Lock the connector (no. 3) again to avoid possible breakage.

DISASSEMBLY PROCEDURE

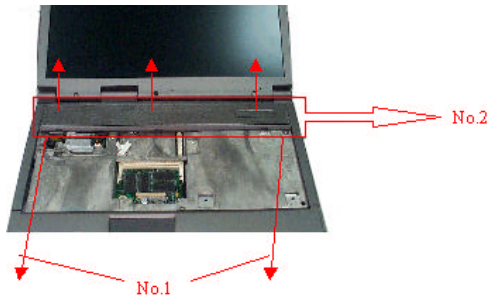
5. Finally the keyboard plate can be removed from the notebook.



FUNCTION
CAP
REMOVAL

Removing Function Cap

1. Remove 2 screws (no.1, M2*3L(K)B-NI) from the top case.
2. Pull up and remove the Function Cap from the top case (no.2).



C P U

CPU Module

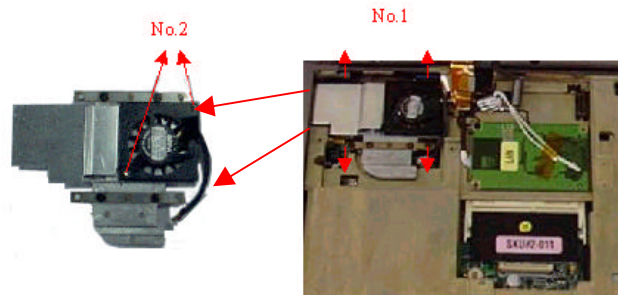
The illustrations below show how to remove the CPU module from the notebook.

Please do not disassemble the module.

C P U
R E M O V A L

Removing CPU

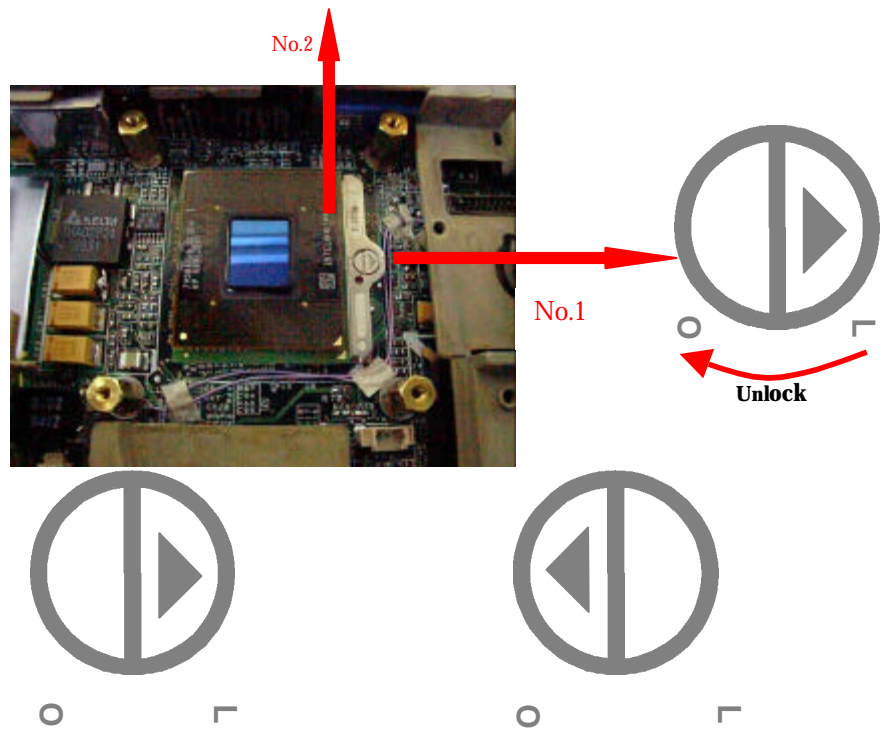
1. Disconnect the CPU fan cable.
2. Remove 4 screws (no.1, M2*3L(K)W-NI).
3. Remove the CPU Thermal Module from motherboard.
4. Remove 2 screws (no.2) to separate the CPU fan from CPU thermal module

***There are two types of CPU sockets.***

First, the Molex socket.

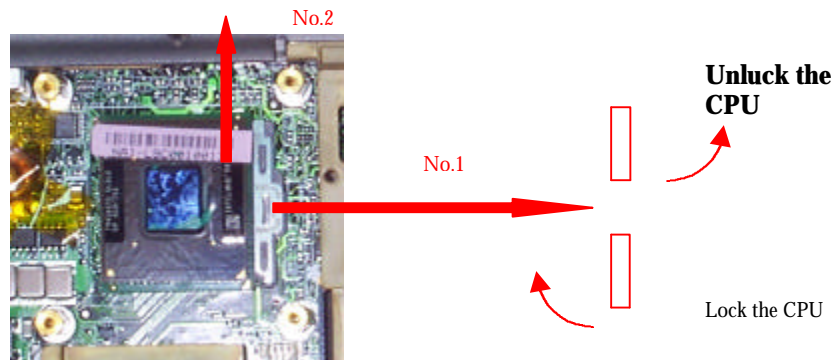
5. Unlock the CPU socket (no. 1) with a Molex CPU socket tool, i.e., the arrow points to the straight left.
6. Turn the non-removable screw here 180 degree counter-clockwise to loosen the CPU.

DISASSEMBLY PROCEDURE



Second, the AMP socket.

5. Unlock the CPU socket (no. 1) with a AMP CPU socket tool,
6. Turn the non-removable screw here in counter-clockwise direction until you hear the click to loosen the CPU.



DISASSEMBLY PROCEDURE

7. Use the CPU vacuum to “suck up” the CPU and lift the CPU away. (no. 2).

LCD

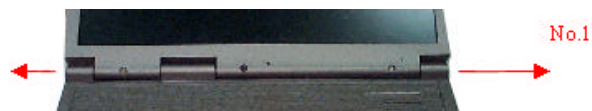
LCD Module

The illustrations below show how to remove and disassemble the LCD module. The module contains LCD panel, invert, LCD hinge bracket, hinge cover, LCD front cover and LCD bottom case. **Please do not disassemble the individual parts**

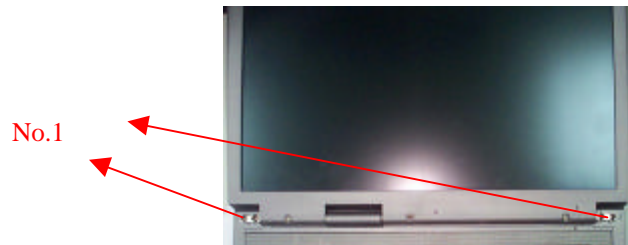
LCD
REMOVAL

Removing LCD Module

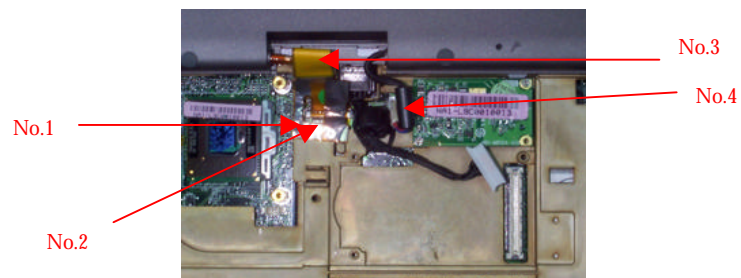
1. With the display panel opened at a 45° angle, remove the two hinge covers (one of each side, no. 1) by sliding them out with a single-slotted screwdriver.



2. Remove 4 screws (no.1, M2.5*8L(B)B-NI) from the hinge feet.



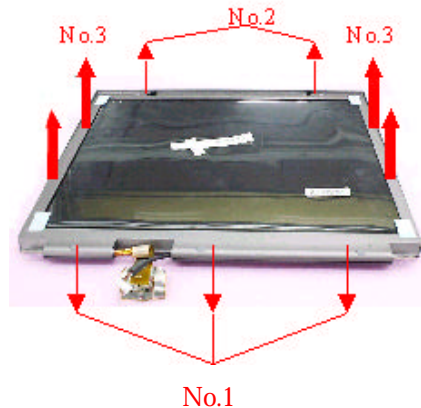
3. Remove 2 screw (no. 1, M2*12L(K)B-NI, no.2, M2*3L(K)W-NI) that secures the LCD cable to disconnect the LCD cable (no. 3) and the inverter cable (no. 4) from the motherboard.



4. Lift straight up the LCD panel from the system.

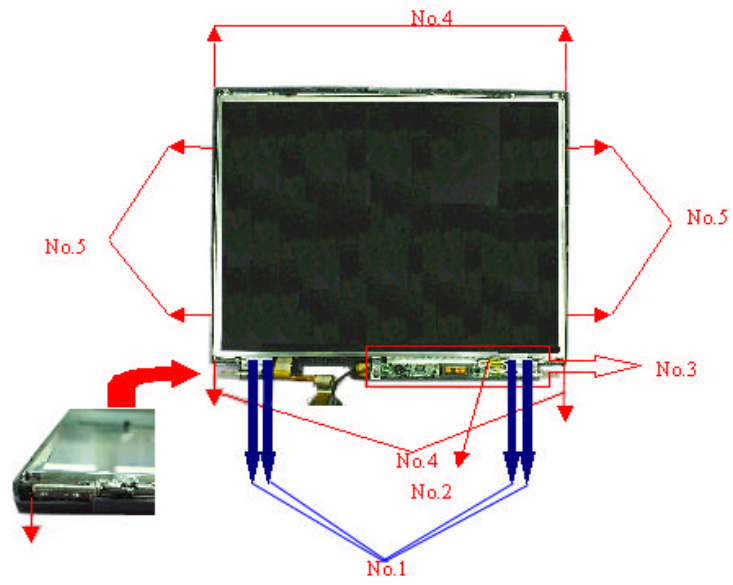
Disassembling LCD Module

1. Remove 3 rubber pads along the lower edge of the LCD module (no. 1) and 3 screws underneath them.
2. Remove 2 rubber pads along the upper edge of the LCD module (no. 2) and 2 screws underneath them.
3. Carefully pry the inside edges of the LCD case open on all four edges (no. 3) with your fingers. Then, lift it away from the LCD module.



4. Remove 4 screws (no.1, M2.5*6L(B)B-NI).
5. Disconnect the inverter cable (no. 2) and lift the inverter away from the LCD module (no. 3).
6. Remove 4 screws (no.4, M2*3L(K)W-NI) to separate the LCD panel from the LCD bottom case
7. Remove the panel from the LCD bottom case and remove 4 screws (no.5, M2*3L(K) W-NI) on both sides to separate the LCD hinge brackets from the panel.

DISASSEMBLY PROCEDURE



 PALM REST
 MODULE

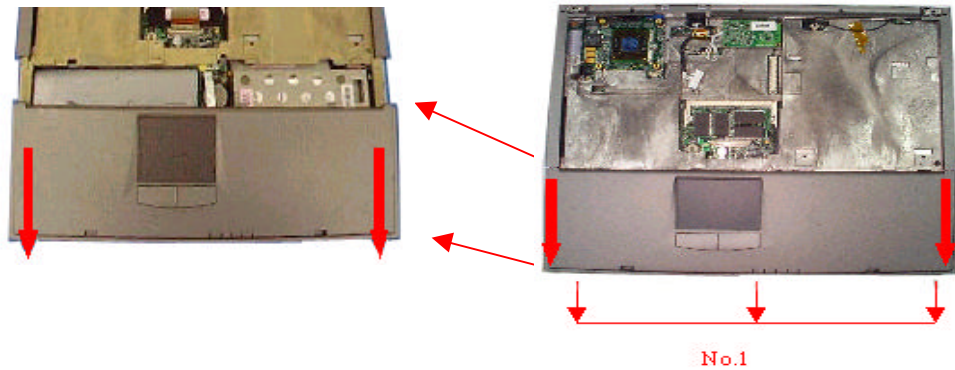
 PALM
 REST
 MODULE
 REMOVAL

Palm Rest Module

The illustrations below show how to remove the palm rest module from the notebook.

Removing Palm Rest Module

1. Remove 3 screws (no.1, M2.5*8L(B)B-NI) at bottom of the notebook.
2. Slide out the palm rest module. **Do not lift the module straight up from the system directly. It will damage the power switch.** Please be gentle when pulling out the palm rest module from the bottom case and lay the palm rest Module down over the top case module. Do not remove the palm rest module yet. The touch pad cable is still attached.



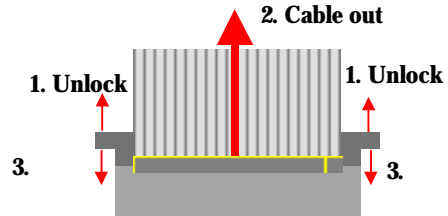
3. Remove 1 screw (no.1, M2.5*8L(B)B-NI).



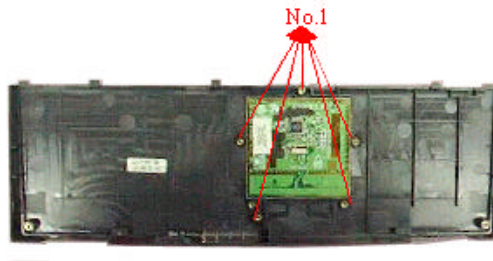
4. Remove Touch Pad cable. 1) Use a flexible connector tool to unlock the cable connector on both ends (no. 1). 2) Carefully pull out the keyboard cable (no. 2) with a

DISASSEMBLY PROCEDURE

pair or tweezers.3) Lock the connector (no. 3) again to avoid possible breakage. 4) Finally the keyboard plate can be removed from the notebook.



5. Remove 5 screws (no.1, M2*2.5L(K) B-NI).



6. Release the Touch Pad module from palm rest module.
7. Release the power switch from palm rest module.



HDD MODULE

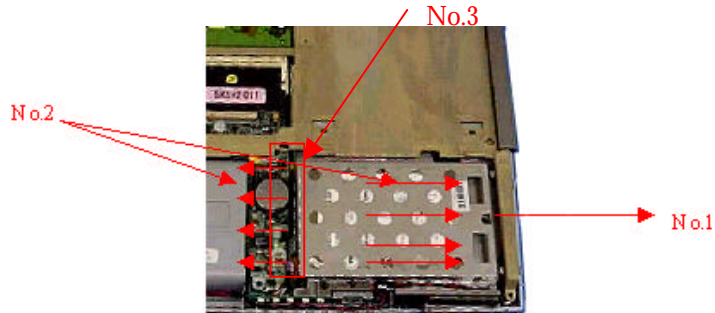
HDD Module

The illustrations below show how to remove the HDD module from the notebook.

HDD MODULE
REMOVAL

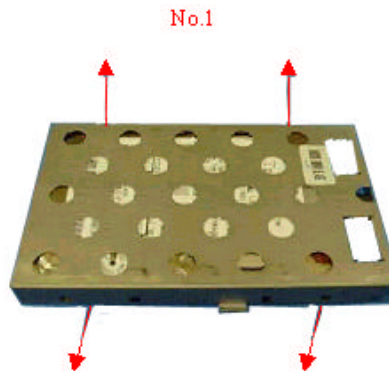
Removing HDD Module

1. Release 1 screw (no.1, M2*4L(K)B-NI) from HDD bracket.
2. Hold the FDD/CD/HEE board and follow the arrow direction below to slide out the HDD module (no.2) and disconnect from the FDD/CD/HDD board (no3).

HDD MODULE
DISASSEMBLY

Disassembling HDD Module

1. Remove a total of 4 screws (no.1 M3*4 (K) W-NI) on both sides of the HDD module.



Please do not touch inside of the HDD module.

 TOP CASE
 MODULE

Top Case Module

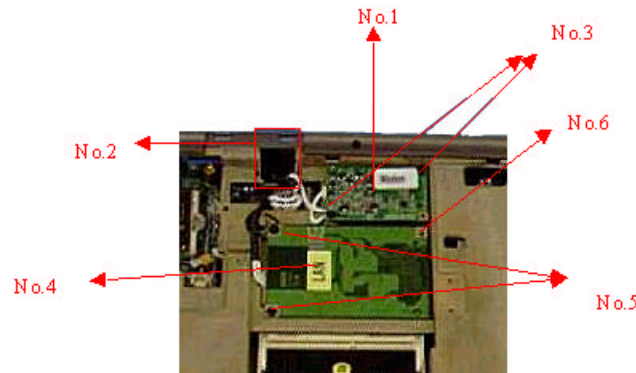
The illustrations below show how to disassemble and remove the top case module of the notebook. The module contains the top case itself, system frame, and lid switch

 LAN / MODEM
 MODULE
 REMOVE

Removing Lan/Modem module (optional)

1. If there is a modem installed (no.1), then first disconnect the phone jack cable (no.2).
 - 1) Remove 2 screws (no.3, M2*3L(K)W-NI).
 - 2) Disconnect the modem cable and lift the board away from the top case.

2. If there is a Lan installed (no.4), then first disconnect the phone jack cable.
 - 1) Remove 2 screws (no.5, M2*3L(K)W-NI) and 1 screw (no.6, M2*12L(K)B-NI).
 - 2) Disconnect the LAN cable and lift the board away from the top case.



3. Disconnect the lid switch cable on the motherboard (no.1)

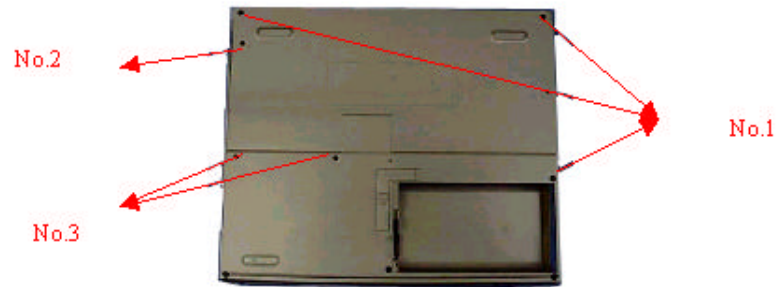


 TOP CASE
 MODULE
 REMOVE

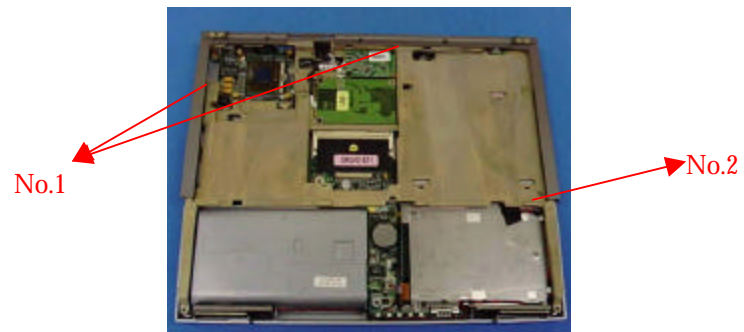
Removing Top Case Module

1. Remove 3 screws (no.1, M2.5*8L(B)B-NI) and 1 screw (no.2, M2*6L(K)B-NI) and 2 screw2 (no.3, M2*4L(K)B-NI) at bottom of notebook.

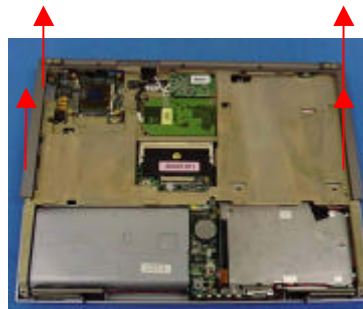
DISASSEMBLY PROCEDURE



3. Remove 2 screws (no.1, M2.5*8L(B)B-NI) and 1 screw (no.2, M2.5*5L(K)W-NI) to separate the top case to the bottom case.



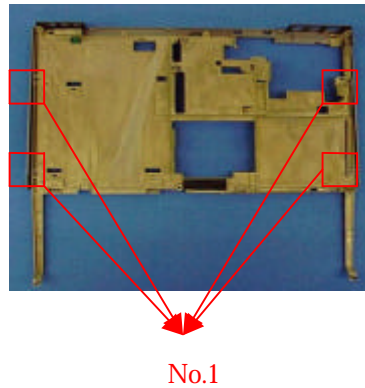
4. Lift it up to release the top case.



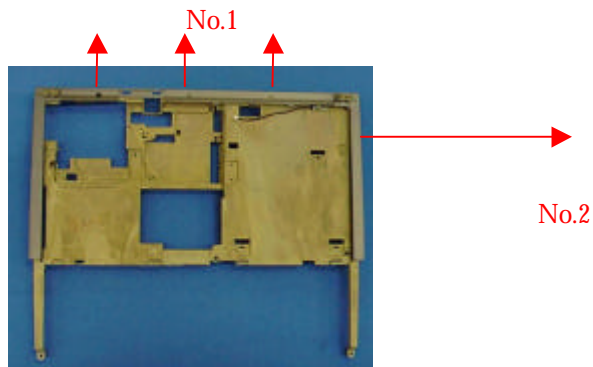
SYSTEM
FRAME
DISASSEMBLY

Disassembling System Frame

1. Remove 4 screws (no.1, M2*2.5L(K) B-NI) from the bottom of the top case module.



2. Remove 3 screws (no.1, M2*2.5L(K)B-NI) on the top side of the system frame.
3. Lift up the system frame (no.2) from the top case.



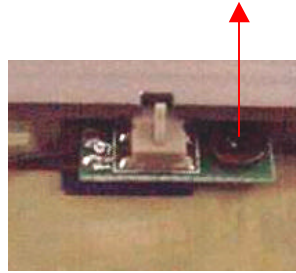
LID SWITCH
MODULE
REMOVE

Removing Lid Switch Module

1. Remove 1 screw (no.1, M2*2.5L(K)B-NI) from the board.
2. Lift lid switch away from the motherboard.

DISASSEMBLY PROCEDURE

No.1



 BOTTOM
CASE
MODULE

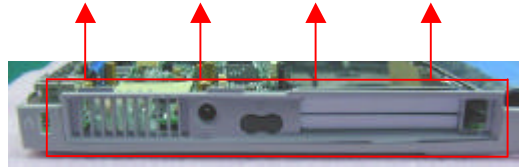
Bottom Case Module

The illustrations below show how to disassemble and remove the bottom case module of the notebook. The module contains the bottom case itself, LED board, CD-ROM, speaks, side cover and charger board.

 SIDE COVER
MODULE
REMOVAL

Removing Side Cover Module

1. Lift up the side cover module away from bottom case.

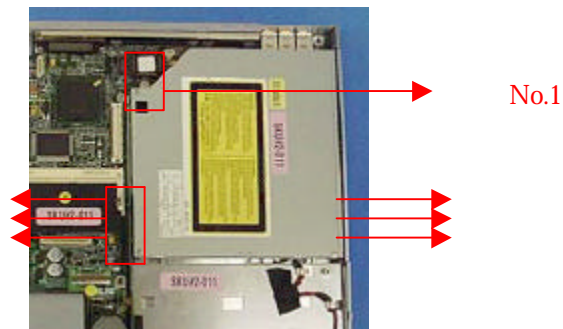


3. Disconnect the speaker cable.

 CD-ROM
MODULE
REMOVAL

Removing CD-ROM Module

1. Remove 1 screw to separate the CD-ROM from motherboard (no.1, M2*6L(K)B-NI).
2. Hold the FDD/CD/HDD board and follow the arrow direction below to slide out the CD-ROM module and disconnect from the FDD/CD/HDD board.
3. Lift the CD-ROM module away from motherboard.



 LED BOARD
REMOVAL

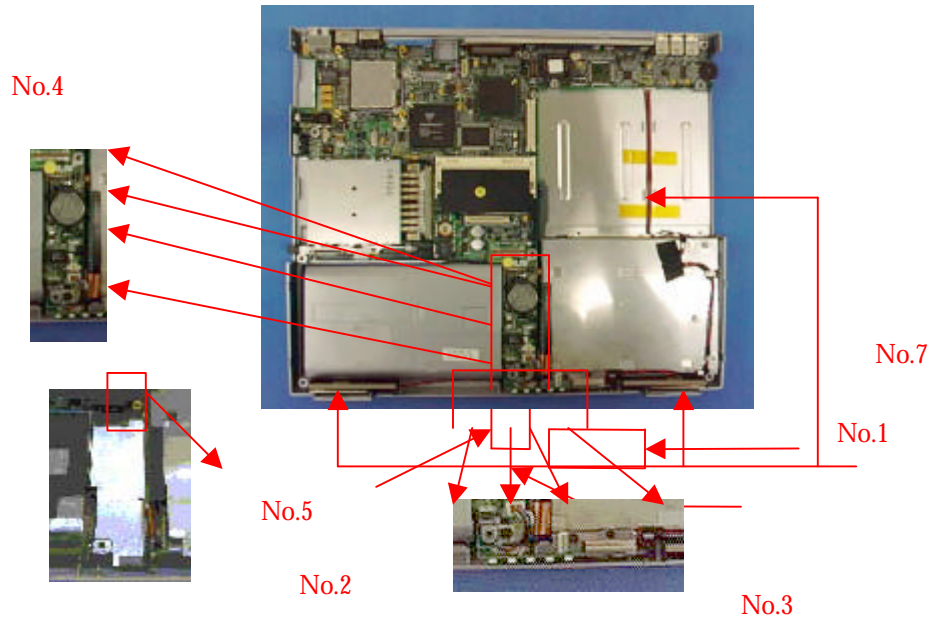
Removing LED Board

1. Remove 2 screws (no.1, M2*3L(k) W-NI).
2. Remove LED bracket from the FDD bracket.
3. Remove the LED board cable (no.2)
4. Remove LED board (no.3) from the bottom case.

C H A R G E
B O A R D
R E M O V A L

Removing Charge Board

1. Remove the Charge board (no.4).
2. Remove 1 spacer screw (no.5, H=5.8mm).
3. Remove the Charge board bracket (no.6).



S P E A K E R S
R E M O V A L

Removing Speakers

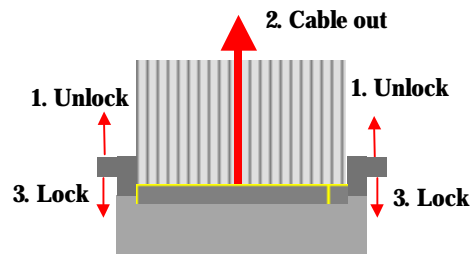
1. Lift up both speakers and speaker cable (no.7) away from the bottom case.

F D D C A B L E
R E M O V A L

Removing FDD CABLE

1. Use a flexible connector tool to unlock the cable connector on both ends (no. 1).
2. Carefully pull out the FDD cable (no. 2) with a pair of tweezers.
4. Lock the connector (no. 3) again to avoid possible breakage.

DISASSEMBLY PROCEDURE



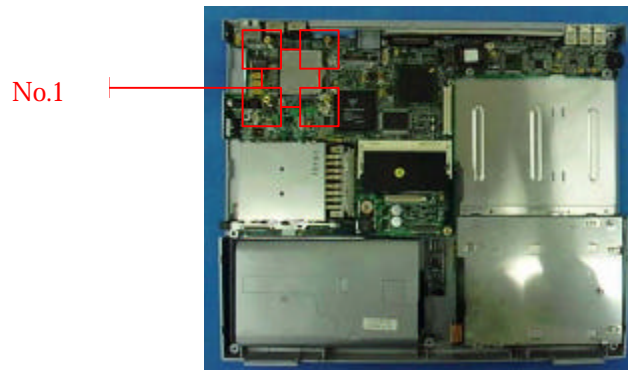
M / B

Motherboard Module

The illustrations below show how to disassemble and remove the motherboard module of the notebook. The module contains the motherboard itself, HDD/CD/FDD board, MB shielding bracket, FDD module and PCMCIA box..

Removing Motherboard

1. Remove 4 spacer screws (no.1, H=10.5mm) with a spacer screw driver. Remove the motherboard from bottom case at a 30 degree angle.

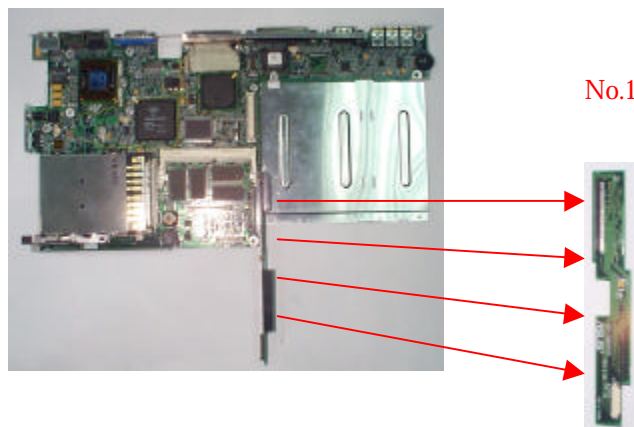


M O T H E R B O A R
D R E M O V A L

H D D / C D / F D D
B O A R D
R E M O V A L

Removing HDD/CD/FDD board

1. Remove the HDD/CD/FDD board (no.1) from the motherboard. The connector is at the top of bottom of the HDD/CD/FDD board.

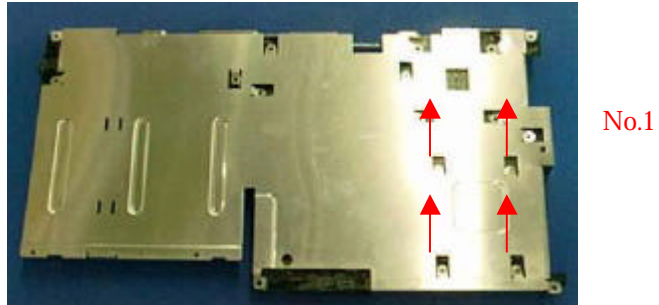


Disassembling Motherboard

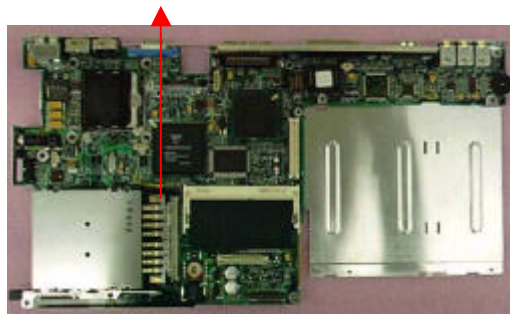
1. Remove 4 screws (no.1, M2*12L) from the bottom of the MB shielding bracket.

M / B
D S A S S E M B L Y

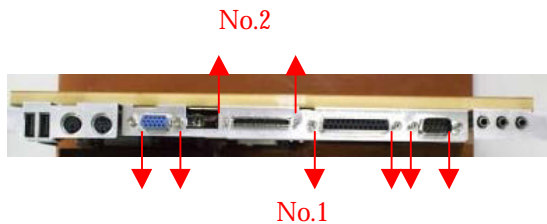
DISASSEMBLY PROCEDURE



2. Lift up the PCMCIA box (no.1) from the motherboard.

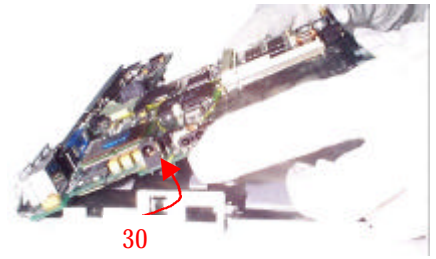
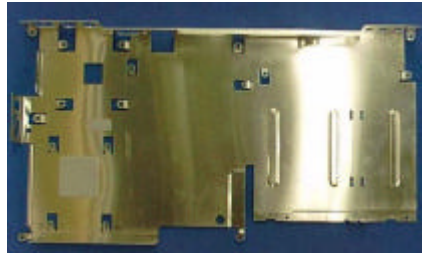


3. Remove 6 hex screws (no.1, HEX 5mm) from the back of the motherboard with a spacer screw driver and 2 lock screws for docking port (no.2, HDR-E14LMY-SL-02C) with a single-slotted screw driver.



4. Remove the motherboard from the MB shielding bracket at a 30 degree angle.

DISASSEMBLY PROCEDURE



FDD MODULE

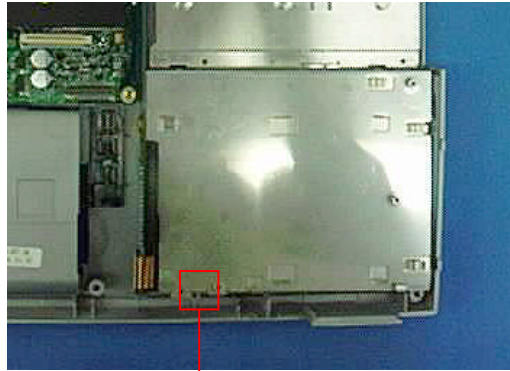
FDD Module

The illustrations below show how to disassemble the FDD module.

FDD MODULE
REMOVAL

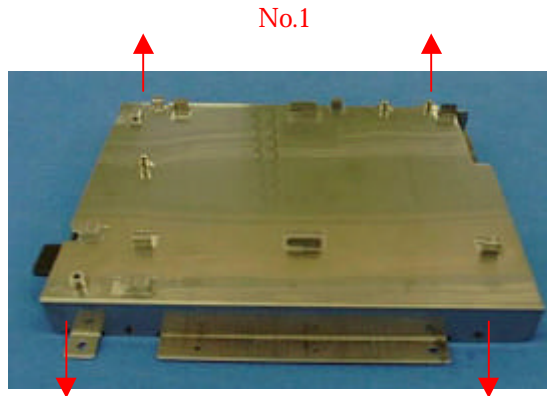
Removing FDD module

1. Remove 1 screw (no 1, M2*3L (K) W-NI).



No.1

2. Remove the FDD module from the bottom case
3. Remove a total of 4 screws (no.1, M2.5*2.5) on both sites of the FDD module.
4. Separate the FDD bracket from the FDD.



No.1

DISASSEMBLY PROCEDURE